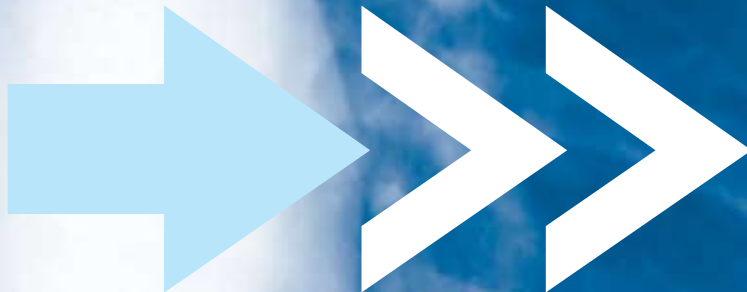


# TOP 10 World's Leading DIAGNOSTIC IMAGING Companies

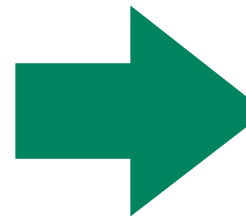
## 1000 PAGES & 90 TABLES

- |                                   |                                   |
|-----------------------------------|-----------------------------------|
| <input type="checkbox"/> Aloka    | <input type="checkbox"/> Hologic  |
| <input type="checkbox"/> Analogic | <input type="checkbox"/> Philips  |
| <input type="checkbox"/> Esaote   | <input type="checkbox"/> Shimadzu |
| <input type="checkbox"/> GE       | <input type="checkbox"/> Siemens  |
| <input type="checkbox"/> Hitachi  | <input type="checkbox"/> Toshiba  |



**VENTURE PLANNING GROUP** [WWW.VPGCORP.COM](http://WWW.VPGCORP.COM)

INFORMATION • INTELLIGENCE • ANALYSIS • INSIGHT



## Worldwide Market Overview

The study provides an approximately 30-page worldwide overview of the diagnostic imaging market, including:

- Estimates of the market size and growth, including the 2009-2013 sales forecasts by geographic region and modality.
- Review of the U.S. and international technological, regulatory, economic, demographic and social trends with potentially significant impact on the diagnostic imaging industry during the next five years.
- Analysis of major geographic regions, including North America, Europe, Japan and Latin America.
- Discussion of trends in X-ray, ultrasound, MRI, CT, nuclear medicine, PET, PACS and other technologies.

## Comparative Analysis

In this section of the report, the **Top 10** companies are ranked according to the following criteria:

- The 2009 sales and market shares in the U.S., Europe, Japan and other geographic regions
- The 2009 sales by modality
- The 2009 operating profit and margins
- The 2009 R&D expenditures

## Company Strategic Assessments

For each of the **Top 10** companies, the report provides an approximately 95-page strategic analysis, including the following information:

### Section I: Executive Summary

- A 3-15 page synopsis of key sections

### Section II: Business Organization

- History of the imaging business evolution, which is important to understanding the company's corporate culture and strategies
- Recent acquisitions, divestitures, and significant organizational changes
- Current organizational structure

### Section III: Senior Management

- Management philosophy and attitudes toward the diagnostic imaging market
- Background of key executives

### Section IV: Facilities and Employees

- Location and size of administrative, manufacturing, and R&D facilities in the U.S. and abroad
- New plants under construction
- U.S. and international work force size and distribution

### Section V: Technological Know-How

- Internally developed and acquired diagnostic imaging and related technologies, including X-ray, ultrasound, MRI, CT, nuclear medicine, PET, PACS, and others

### Section VI: Product Portfolio Analysis

- Placements and installed base of major systems in the U.S. and abroad, by modality
- Review of major product lines
- Specifications, features, advantages, weaknesses, introduction dates and prices of current systems

### Section VII: Marketing Tactics

- The U.S. and international sales force size in major geographic regions
- Selling options, including rental plans, leasing and others
- Promotional tactics, e.g., pricing, discounts, advertising, trade shows, seminars, product literature, newsletters, etc.
- System service and support

### Section VIII: Sales and Profit Growth, 2008-2012

- The 2008 sales estimates by division, geographic region, and modality
- The 2008-2012 sales and operating profit performance

### Section IX: R&D Expenditures and Major Programs

- The 2008 R&D budget, research facilities, and staff
- New technologies, systems, and applications in development, including their specifications and anticipated introduction dates

### Section X: Collaborative Arrangements

- Major joint venture, distribution, O.E.M., and licensing partners, both industrial and academic
- Terms of collaborative agreements and specific products involved

### Section XI: Strategic Direction

- Business, new product development, and marketing strategies
- Anticipated acquisitions, joint ventures, and divestitures

## LIST OF TABLES

**“THE 2007 TOP 10 WORLD’S LEADING DIAGNOSTIC IMAGING COMPANIES” IS A UNIQUE MULTI-CLIENT STUDY PREPARED BY VPG TO PROVIDE INDUSTRY EXECUTIVES WITH STRATEGICALLY SIGNIFICANT COMPETITOR INFORMATION, ANALYSIS AND INSIGHT.**

<b>Table MO-1</b>	Worldwide diagnostic imaging market forecast by geographic region	<b>Table PH-1</b>	Philips sales and operating profit growth
<b>Table MO-2</b>	Worldwide diagnostic imaging market by modality and geographic region	<b>Table PH-2</b>	Philips sales by product sector
<b>Table MO-3</b>	Worldwide diagnostic imaging market forecast by modality	<b>Table PH-3</b>	Philips sales growth by product sector
<b>Table AL-1</b>	Aloka sales and operating profit growth	<b>Table PH-4</b>	Philips operating profit by product sector
<b>Table AL-2</b>	Aloka sales by geographic region	<b>Table PH-5</b>	Philips operating profit growth by product sector
<b>Table AN-1</b>	Analogic sales and operating profit growth	<b>Table PH-6</b>	Philips sales by geographic region
<b>Table AN-2</b>	Analogic sales by business segment	<b>Table PH-7</b>	Phillips sales growth by geographic region
<b>Table AN-3</b>	Analogic sales by geographic region	<b>Table SH-1</b>	Shimadzu revenue by product category
<b>Table AN-4</b>	Analogic sales by customer	<b>Table SH-2</b>	Shimadzu imaging systems sales and operating profit growth
<b>Table AN-5</b>	Analogic sales growth by customer	<b>Table SH-3</b>	Shimadzu imaging systems sales by geographic region
<b>Table ES-1</b>	Esaote sales and operating profit growth	<b>Table SH-4</b>	Shimadzu imaging systems sales by modality/business
<b>Table ES-2</b>	Esaote sales by business segment	<b>Table SH-5</b>	Shimadzu imaging systems sales by modality/business and geographic region
<b>Table ES-3</b>	Esaote sales growth by business segment	<b>Table SH-6</b>	Shimadzu imaging systems placements and installed base by modality and geographic region
<b>Table ES-4</b>	Esaote sales by geographic region	<b>Table SI-1</b>	Siemens imaging systems sales and operating profit growth
<b>Table ES-5</b>	Esaote sales growth by geographic region	<b>Table SI-2</b>	Siemens imaging systems sales by geographic region
<b>Table GE-1</b>	GE revenue by operating segment	<b>Table SI-3</b>	Siemens imaging systems sales by modality/business
<b>Table GE-2</b>	GE profit by operating segment	<b>Table SI-4</b>	Siemens imaging systems sales by modality/business and geographic region
<b>Table GE-3</b>	GE medical imaging systems sales and operating profit	<b>Table SI-5</b>	Siemens imaging systems placements and installed base by modality and geographic region
<b>Table GE-4</b>	GE medical imaging systems sales by geographic region	<b>Table TO-1</b>	Toshiba sales by industry segment
<b>Table GE-5</b>	GE medical imaging systems sales by modality/business	<b>Table TO-2</b>	Toshiba operating profit and margins by industry segment
<b>Table GE-6</b>	GE medical imaging systems sales by modality/business and geographic region	<b>Table TO-3</b>	Toshiba medical systems sales and operating profit growth
<b>Table GE-7</b>	GE medical imaging systems placements and installed base by modality and geographic region	<b>Table TO-4</b>	Toshiba medical systems sales by geographic region
<b>Table HI-1</b>	Hitachi revenue by industry segment	<b>Table TO-5</b>	Toshiba medical systems sales by modality/business
<b>Table HI-2</b>	Hitachi operating profit by industry segment	<b>Table TO-6</b>	Toshiba medical systems sales by modality/business and geographic region
<b>Table HI-3</b>	Hitachi imaging systems sales and operating profit growth	<b>Table TO-7</b>	Toshiba medical systems placements and installed base by modality and geographic region
<b>Table HI-4</b>	Hitachi imaging systems sales by geographic region	<b>Table CA-1</b>	Top 10 world’s leading diagnostic imaging companies sales comparison by geographic region
<b>Table HI-5</b>	Hitachi imaging systems sales by modality/business	<b>Table CA-2</b>	Top 10 world’s leading diagnostic imaging companies sales comparison by modality
<b>Table HI-6</b>	Hitachi imaging systems sales by modality/business and geographic region	<b>Table CA-3</b>	Top 10 world’s leading diagnostic imaging companies operating profit and margins comparison
<b>Table HO-1</b>	Hologic sales and operating profit growth	<b>Table CA-4</b>	Top 10 world’s leading diagnostic imaging companies R&D expenditure comparison
<b>Table HO-2</b>	Hologic sales by product line		
<b>Table HO-3</b>	Hologic sales growth by product line		
<b>Table HO-4</b>	Hologic operating profit by product line		
<b>Table HO-5</b>	Hologic operating profit growth by product line		
<b>Table HO-6</b>	Hologic sales by geographic region		

## About This Report

---

### Rationale

---

Strategic assessment of the competitive environment is widely recognized as one of the highest priority management responsibilities—crucial to business survival, growth, and profitability. Timely and factual competitive intelligence is vital to the success of all business functions, particularly Marketing, Planning, R&D, and Manufacturing.

In a highly dynamic diagnostic imaging market, besieged by intense competition and the rapid pace of technological innovations, the ability to anticipate new product introductions and marketing strategies is particularly important...and spells the difference between success and failure.

### Objectives

---

**“The 2009 Top 10 World’s Leading Diagnostic Imaging Companies”** is a unique multiclient study prepared by VPG in order to provide industry executives with strategically significant competitor information, analysis, and insight crucial to the development and implementation of effective business, marketing, and R&D programs. The study’s major objectives include:

- To establish a comprehensive, factual and cost-effective information base on performance, capabilities, goals, and strategies of the world’s leading diagnostic imaging companies.
- To help current suppliers realistically assess their financial, technological, and marketing capabilities vis-a-vis leading competitors.
- To assist potential market entrants in evaluating prospective acquisitions and joint venture candidates.
- To complement organizations’ internal competitor information gathering efforts with strategic analysis, data interpretation, and insight.

### Methodology

---

The **Top 10** report is based on interviews with current and former executives, customers, suppliers, financial analysts, as well as experts from trade associations, and others knowledgeable of the companies’ current operations and strategic directions. The study also includes the information obtained from industry shows, marketing conferences and scientific symposia.

In addition to primary sources, the **Top 10** report contains information retrieved from VPG’s proprietary database, which has been developed in the course of continuous monitoring of the diagnostic imaging industry, as well as over 100 multi-client studies and numerous single-client assignments. This database contains extensive information on companies, technologies, products and executives worldwide.

Moreover, a comprehensive review of the **Top 10** companies’ product and financial literature, local press, business and technical periodicals, trade and professional association surveys, marketing meeting presentations, patents, government documents and pertinent industry analyst reports was conducted.

### Special Features

---

- 1000 pages of vital market intelligence.
- 90 tables containing estimates of the **Top 10** companies’ sales and operating profit by division, geographic region and modality.
- A 30-page Worldwide Market Overview, including sales forecasts for major geographic regions, market segments, and modalities.
- Comparative Analysis ranking the **Top 10** companies according to their sales, profit and R&D expenditures.



# ORDER FORM

TO: VENTURE PLANNING GROUP

350 Fifth Avenue • Suite 3304 • New York • NY • 10118 tel. 212.564.2838 fax. 212.564.8133 info@vpgcorp.com

I am interested in your new study:

## “The Top 10 World’s Leading Diagnostic Imaging Companies”

I am interested in a complete 10-company report:

	Before July 31, 2009	After July 31, 2009
<input type="checkbox"/> PDF .....	\$10,400 .....	\$12,500
<input type="checkbox"/> Print .....	8,700 .....	10,400
<input type="checkbox"/> Both .....	13,400 .....	16,000

I am interested in the following individual company assessments:

- Aloka     Esaote     Hitachi     Philips     Siemens  
 Analogic     GE     Hologic     Shimadzu     Toshiba

Cost per company:

	Before July 31, 2009	After July 31, 2009
<input type="checkbox"/> PDF .....	\$1,600 .....	\$1,900
<input type="checkbox"/> Print .....	1,350 .....	1,600
<input type="checkbox"/> Both .....	2,100 .....	2,450

name:

title:

company:

address:

city:

state:

zip:

country:

telephone:

fax:

email:

### Payment Options

- Check payable to Venture Planning Group     Please send me an invoice     Please charge my credit card

card type:  Visa     MasterCard     AMEX     Other

cardholder's name:

card number:

expiration date:

signature:

